

Internationalisation at Higher Education Institutions

A View from the Faculties

Achim Dohrenbusch

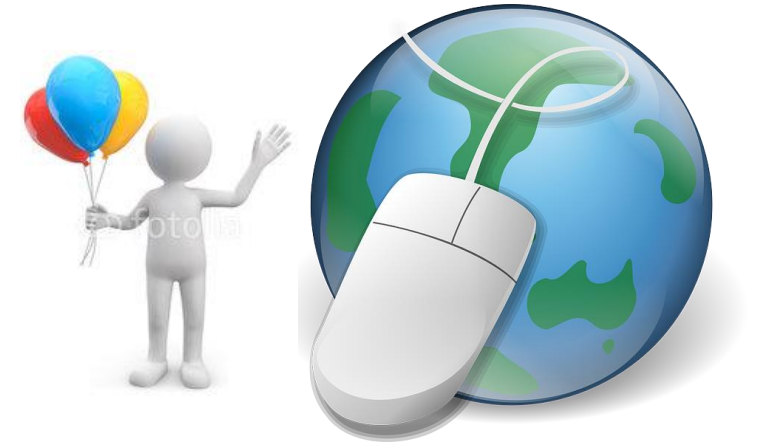
Faculty of Forest Sciences and Forest Ecology



1. International mobility



2. International teaching cooperation



3. International research



4. International cooperation in institutional development



1. International mobility

exchange of

students

lecturers

researchers

administrative staff





Erasmus scholarschip

Country group

Denmark, Finland, France, Great Britain, Ireland, Italy, Norway, Austria, Sweden

250 - 500 €/month

Country group

Belgium, Germany, Greece, Iceland, Croatia, Luxemburg, The Netherlands, Portugal, Slovenia, Spain, Czech Rebubble, Turkey, Cyprus

200 - 450 €/month

Country group

Bulgaria, Estlonia, Lattvia, Lituania, Malta, Macedonia, Poland, Rumania, Slovakia, Hungary

150 - 400 €/month

For EU citizens

At least one year passed at a EU univerity

3-12 months stay abroad

Average 325 € /month

2. International teaching cooperation

mutual recognition
of academic achievements

integrated study phases
at the partner institution



joint study programs

joint degrees, double degrees



M.Sc. Sustainable Forest and Nature Management - I

- Joint degree with 4 partner universities in Europe
- Top-level, research-based education
- Gives competencies for working with sustainable forest and nature management issues
- Supported by Erasmus Mundus



The University of Copenhagen,
Centre for Forest, Landscape and
Planning, Copenhagen, Denmark



Bangor University
School of the Environment and Natural
Resources, Bangor, UK



University of Göttingen
Faculty of Forest Sciences and Ecology,
Göttingen, Germany




Swedish University of Agricultural Sciences-
Southern Swedish Forest Research Centre,
Alnarp, Sweden



University of Padua
Faculty of Agriculture, Padova, Italy

M.Sc. Sustainable Forest and Nature Management - II

FIRST YEAR (60 ECTS)		SECOND YEAR (60 ECTS)	SPECIALISATION	JOINT DEGREES	
Bangor Max. 25 students	Joint Summer Module	Bangor Max. 15 students	Conservation and land management	MSc in Environmental Forestry/ MSc in Conservation and Land Management	
Copenhagen Max. 25 students		Copenhagen Max. 15 students	Economic management of forests and nature	MSc in Forestry	
Göttingen Max. 25 students		Göttingen Max. 15 students	Timber and non-timber forest product use and processing	MSc in Forestry	
 SUFONAMA European Erasmus Mundus MSc		Alnarp Max. 15 students	Scandinavian and East European forestry	MSc in Forestry	
		Padova Max. 15 students	Mountain forestry and watershed management	MSc in Forestry and Environmental Sciences	

International research

cooperation:
research projects

graduate schools

conferences

publications





GEORG-AUGUST-UNIVERSITÄT
GÖTTINGEN



faculties



International cooperation in institutional development:

exchange of experiences or
institutional development

further education of
university members,

cooperation between
university computer center
and university libraries





What is possible?

Capacity problems of the faculties

until 1999:

1 diploma program
Forest Sciences



2000 – today

- 1 B.Sc. Program (German)
- 1 B.Sc. Program (English) MES
- 1 B.Sc. Program (3 Faculties) ÖSM
- 1 M.Sc. Program (German) 3 specifications : Forest Wood Nat. Cons.
- 1 M.Sc. Program (English) 3 specification: TIF ES EAM
- 1 M.Sc. Program (English) SUFONAMA joint degree

+ 3 Ph.D. programs

