

Research collaboration

TIGRIS Workshop, Göttingen, 21 February 2019

Roger Janssens, KU Leuven Faculty of Arts



Macro-level context (1)

- Flanders = 6.5(+) m inhabitants
- Per capita GDP = 35,100 EUR
- Education budget = 11.7 bn EUR (=26% of Flemish budget)
- of which Higher Education = 1.9 bn EUR (=16%)
- 1.8 bn EUR = 15,500 faculty/staff at universities and 11,000 at other HEIs
- 61 m EUR for infrastructure investments (30+2 m EUR for universities)
- 88 m EUR for study allowances (i.e. scholarships) (33 m EUR for universities)
- Flemish contribution to FWO (Flemish Fund for Scientific Research) budget = 350 m EUR (200 m EUR permissible expenditure in 1 year)

Macro-level context (2)

- Compulsory education is free: ages 6-18
- Kindergarten / pre-school (ages 2.5-5) is free; c.97% participate
- Day-care (ages 0-3): rate based on income (+admissible expense);
5.24 – 29.09 EUR/day
- -> no reason for female researchers to stay at home

Macro-level context (3)

- 240,332 students in higher education, of whom 120,782 at university
- (Leuven: 45,500; Ghent: 38,000; Antwerp: 17,000; Brussels: 12,000; Hasselt: 3,500)
- 5 universities, c.1 per province, all public (i.e. state-subsidized)
- No entrance exams except for Medicine; selection at end of 1st year
- State-imposed tuition fees for BA and initial MA programmes: 938.8 EUR/yr (local students); PhD programmes: 938.8 EUR/4yrs
- Belgian 30 to 34-year olds: 45.6% has a higher education diploma (50.7% of women; 40.4% of men; on average obtained at/by age 23; EU-28: 39.1%)

Macro-level context (4)

- Expenditure on R&D: 2.67% of GDP (goal: 3%); large slice (45-70%) is business enterprise R&D (mainly chemical and pharmaceutical sectors)
- 39,000 FTE researchers, incl. 16,000 at universities
- 5 universities, 4 large strategic research centres (IMEC, VIB, VITO, Flanders Make), number of smaller/sectoral research centres
- English widely spoken; Flemish 15-year-olds 3rd best English non-native proficiency in Europe [->'world']; end of secondary school: CEFR B1, in reality many aspects of B2

Meso-level (1)

- ‘First stream’ Flemish government funding includes research funding
- 45% of ‘first stream’ funding based on / goes to research
- Criteria include (*inter alia*) # of PhD degrees awarded, # of publications, and # of non-local faculty appointments
- Allows universities to set up their own research funds
- Together with funding from Special Research Fund and Industrial Research Fund (=money from Flemish Ministry for Work, Economic Affairs, Innovation and Sports)
- Research Coordination Office (sections ‘Internal Funds’, ‘National Funds’ and ‘International Funds’)

Meso-level (2)

Internal funds

- Category 1: hypothesis- or question-driven ground-breaking research (fundamental basic research);
- Category 2: research with a societal and/or economic goal in a longer time frame (strategic basic research);
- Category 3: applied research with exploitation in a short time frame.

Meso-level (3)

Category 1	Category 2	Category 3
Fundamental research ('blue sky science'), inspired by curiosity; question- or hypothesis-driven.	Strategic basic research that is society-driven and will encounter societal and/or economic challenges in the future.	Socio-economic applied research with a concrete valorisation plan with defined stakeholders.
Scientific added value.	Scientific and societal, economic or socio-economic added value.	Socio-economic added value.
Mono- or multidisciplinary.	Mono- or multidisciplinary.	Mono-or multidisciplinary.
Impact: scientific.	Impact: mid-long term scientific and societal and/or economical.	Impact: concrete short term valorisation.
Leverage to e.g. FWO, large scale research infrastructure, Marie Skłodowska Curie, FET, BELSPO, and ERC project applications.	Leverage to e.g. FWO (like SBO, large scale research infrastructure), VLAIO, FET, <i>Horizon 2020</i> multipartner (including ITN), Marie Curie and internal Category 3 applications.	Leverage to, e.g. <i>Horizon 2020</i> multipartner project applications, VLAIO, O & Oprojects, patents, contract research with industry/government/other societal actors or creation of spin-off.

Meso-level (4)

Some other forms of project funding:

- Interdisciplinary Networks (ID-N): interdisciplinary research at high international level.
- Start-up grant for research professor (BOFZAP) fellowships and starting professors (ZAP): project funding for two years.
- Runners-up funding (RUN): an incentive for applicants in the role of coordinator or partner of European multipartner research project applications within *Horizon 2020* or related programmes (Joint Technology Initiatives, Joint Programming Initiatives, ERA-Nets) who received an outstanding assessment and are highly ranked, but were not funded by the European financier because of budget restrictions.
- Prospective European Cooperation (VES): funding to prepare for multi-partner project applications with diverse international financiers.
- CELSA Research Fund: collaborative research projects with researchers from CELSA partner universities (=Central and Eastern Europe).

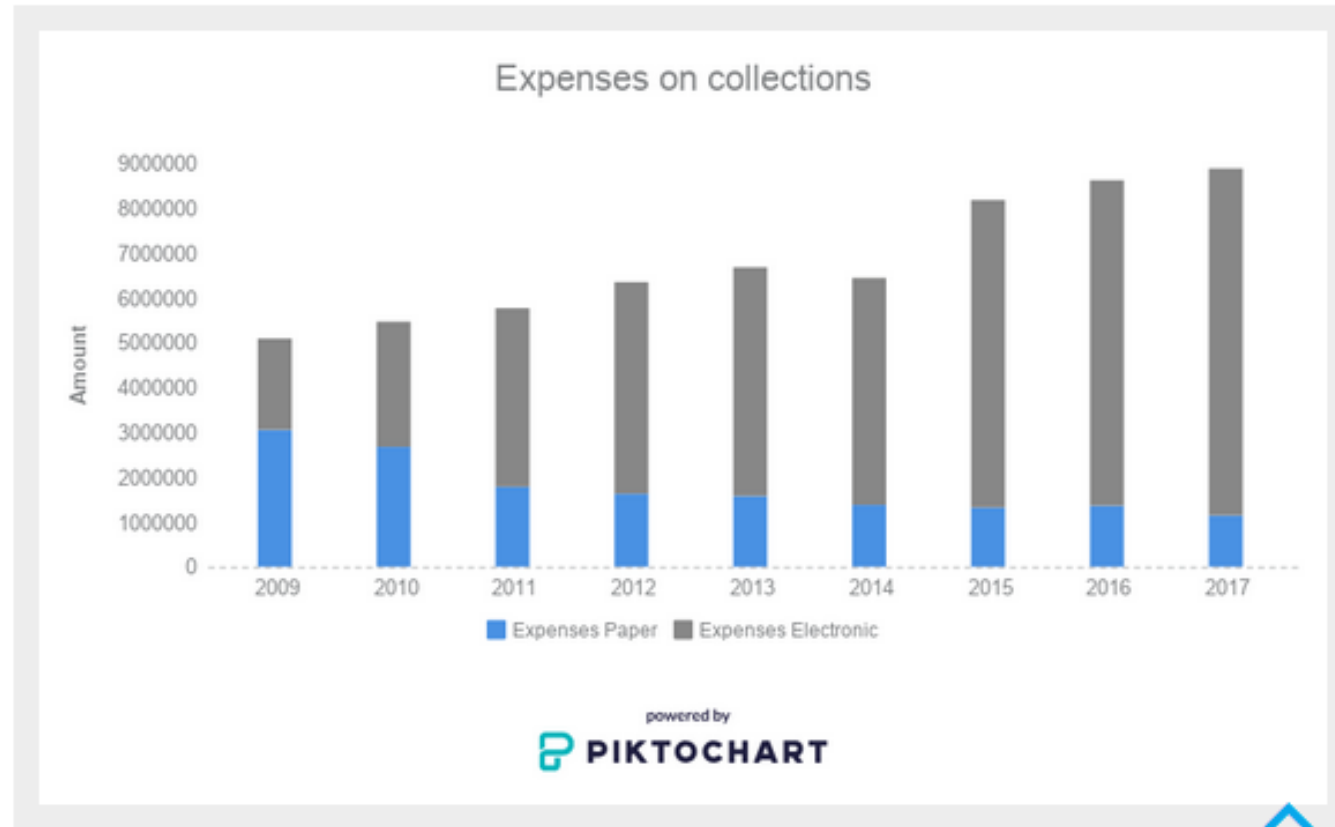
Meso-level (5)

Some other forms of funding (cont'd)

- 'Methusalem': substantial and long-term funding of an internationally leading PI.
- 'Hercules': heavy 'equipment' over 1.5 m EUR

Meso-level (6)

Libraries (labs)



Meso-level (7)

LRD (Leuven Research & Development)

- Technology transfer office (since 1972)
- 80 FTE; turnover of 219 m EUR (low); 3106 new agreements; 99 active spin-offs

University Fund: alumni, donors, sponsors

- 18.5 m EUR; 179 individual 'funds' + 104 chairs

Total research expenditure

- 475 m EUR (not including university hospitals or 'first stream' funding)
- Leverage: 20.4% internal funds, 79.6% external funds

Meso-level (8) / Macro-level context (5)

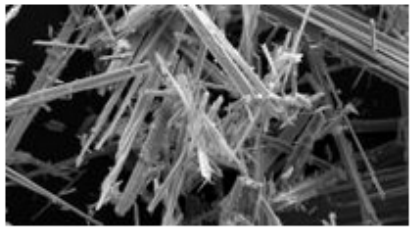
- Evaluation policy
- Promotion policy
- 'Plus est en vous' ('There is always more to be found within yourself.')
- Work-life balance

Micro-level (1)

- Very highly decentralised university
- Humanities and Social Sciences: research groups and research units within faculties
- Science, Technology & Engineering + Biomedical Sciences: departments and faculties
- Individual challenge: research visibility in international context
 - > publications: e.g. Fair Open Access Fund
 - > conferences: FWO and internal travel grants
 - > project proposals: research policy officer / research support team

Micro-level (2)

The MDRN lab runs various funded research projects, a chronological list of which is provided here.



Literary Knowledge (1890-1950): Modernisms and the Sciences in Europe

From 2019

Literary Knowledge (1890-1950): Modernisms and the Sciences in Europe is an Excellence-Funds research programme of the University of Leuven Research Council. It studies the ways in which European literature dealt with insights stemming from the social sciences and humanities, the life sciences and medicine, and the physical sciences and engineering.



Modern Etruscans

From 2019

Modern Etruscans is a research project sponsored by the University of Leuven Research Council. It studies the ways in which Italian and other European literatures in the modernist period dealt with insights stemming from the archaeological discipline of Etruscology.



Avant-Garde Egypt

From 2019

Avant-Garde Egypt is a project funded by the University of Leuven Research Council. It investigates the ways in which European historic avant-garde writing related to Ancient Egypt and its archaeological field of study, Egyptology.

Micro-level (3)



Eugenic Women

From 2019

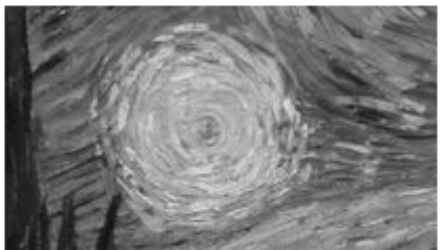
Eugenic Women is a project funded by the University of Leuven Research Council. It examines English and German popular fiction that drew on insights from genetics and eugenics to portray the role of women and to further feminist as well as other causes during the modernist period.



Colonised Citizens

From 2019

Colonized Citizens is a research project sponsored by the University of Leuven Research Council. It studies the ways in which insights from genetics and eugenics were mobilized in fiction dealing with the Belgian and German colonies in the modernist period.



Popular Astronomy

From 2019

Popular Astronomy is a project sponsored by the University of Leuven Research Council. It investigates how German and English-language popular fiction in the modernist period dealt with insights from astronomy.

Micro-level (4)



Poetic Cosmos

From 2019

Poetic Cosmos is a project funded by the University of Leuven Research Council. It studies the ways in which modernist and avant-garde literature gave shape to knowledge about the universe stemming from cosmology.



The Poetics of Precarity

From 2018

The Poetics of Precarity: Representations of the Worker in German Literature in the Aftermath of the "Great Depression" (1873-1914) is a project sponsored by FWO. It studies the representations of precarity in late 19th-century German social novels.



The Irish Short Story and The Bell Magazine (1940-1954)

From 2018

The Irish Short Story and The Bell Magazine (1940-1954): Forging a Tradition is a project funded by FWO. It investigates the publication and mediation of the Irish short story in the influential Irish literary periodical *The Bell* between 1940 and 1954.

Micro-level (5)



Detecting Transcultural Identity in European Popular Crime Narratives

From 2018

DETECT is a project sponsored by the EU Horizon 2020 research and innovation program. It investigates the topics of identity and popular culture and aims to show how the transnational circulation of crime narratives from various European countries has contributed to the formation of a plural, shared European identity.



The Idea of 'Poetry' in Cinema (1920-2015)

From 2017

The Idea of Poetry outside the Boundaries of Literature: the Case of Cinema (1920-2015) is a project funded by FWO. It studies the multiple meanings and functions of 'poetry' and 'the poetic' in cinema and film.



Remembering the City of Life

From 2017

Remembering the City of Life: The Literary Memory of the Occupation of Fiume (1919-2015) is funded by FWO. It studies how the occupation, led by poet Gabriele D'Annunzio, of the town of Fiume (now Rijeka, Croatia) has been represented in literary works from 1919 till the present day.

Micro-level (6)



Photo-Lit: The Belgian Photo Novel

From 2017

PHOTO-LIT - The Belgian Photo Novel: Local Reuse of a European Cultural Practice is a research project funded by the BRAIN-be framework (Belgian Research Action through Interdisciplinary Networks). A media archeological and cultural historical study of the photo novel in Belgium since the late 1940s.



Grieving Alone and/or Together

From 2017

Grieving alone and/or together. Elegies from the Low Countries in the 20th and 21st centuries is a project sponsored by FWO. It studies the genre of the funeral elegy in the Low Countries from the modernist period into the 21st century.



Homo Mimeticus: Theory and Criticism

From 2016

Homo Mimeticus: Theory and Criticism is a project funded by the European Research Council (ERC) under the EU Horizon 2020 research and innovation program. It studies the role behavioral imitation plays in modernist literature, SF film, and continental philosophy.

Micro-level (7)



Comic Modernism

From 2016

Comic Modernism: The Reception of Aristophanes in British Poetry, Fiction, and Criticism, 1900-1940 is a research project funded by FWO. It examines the presence of ancient Greek comedy in British modernist literary culture in an attempt to counter the dominant view of modernist literature as a profoundly serious endeavor.



'His Majesty the Baby'. Literature's Unchained Sovereigns

From 2016

'His Majesty the Baby'. Unchained Sovereigns in Modern and Contemporary Comic Literature is a project funded by the Università di Siena (Progetto Pegaso). The project studies the topos of the unchained sovereign in Western literature.



European Neo-Avant-Gardes

From 2016

European Neo-Avant-Gardes: profile, politics, circulation and mediality is a WOG (Scientific Research Community) funded by FWO. It explores the literary output of the European neo-avant-gardes, focussing particularly on movements in Dutch, French, German and English, and paying special attention to their politics, locality, mediality and genericity.

Opportunities for non-KU Leuven staff

- KU Leuven internal funding open to international collaborators:
<https://www.kuleuven.be/english/research/support/if>
 - Postdoctoral mandates (PDM)
 - Research professorships (BOFZAP)
 - Industrial research managers
 - Senior fellows
- International funding opportunities to collaborate with KU Leuven:
<https://www.kuleuven.be/english/research/EU/f/extra>
 - Host institution for ERC grant
 - Host institution for Marie Skłodowska-Curie fellowship
 - Partner in collaborative research project